



Cell Saver[®] Elite[®]+

Autotransfusion System

Performance you can count on –
because patients are counting on you.



HAEMONETICS[®]

Cell Saver[®] Elite[®]+

Autotransfusion System

You know you're at your best when **everything is working as it should**

When the surgeon is focused on the surgery. And the patient is getting what's best—their own fresh and washed blood. Your standards are high. That's why you demand excellence.

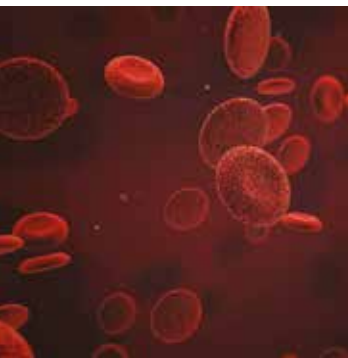
We've evolved cell salvage to a higher level...yours.

The **Cell Saver Elite⁺** system provides hospitals with an easy-to-use way to recover a patient's own blood during medium to high blood loss procedures. This includes cardiac, orthopedic, trauma, transplant, vascular, and OBGYN surgeries. The complete system is designed to be intuitive and flexible for optimal performance and to support exceptional patient care.



Focus on **quality** and **ease of use**

The Cell Saver® Elite®+ system provides patients with their own fresh, washed blood, preventing an allogeneic transfusion while helping to reduce costs. Its integrated SmartSuction® technology is gentle on red blood cells (RBC's), preserving them for transfusion. And, its fat reduction protocol is designed for optimal performance, while still offering custom settings that allow for modifications during a procedure.



This results in:^{1,2}

- High haematocrit and RBC recovery.
- Optimal washout of undesirable components.
- High fat removal performance.
- Maximised patient safety—with autotransfusion and sequestration.

High Quality Red Blood Cells (RBC's)

■ Haematocrit (Hct) level ¹	~ 60%
--	-------

■ RBC recovery ¹	~ 94%
-----------------------------	-------

■ Washout performance¹

✓ Albumin removal	~ 98%
-------------------	-------

✓ Free Hemoglobin	~ 99%
-------------------	-------

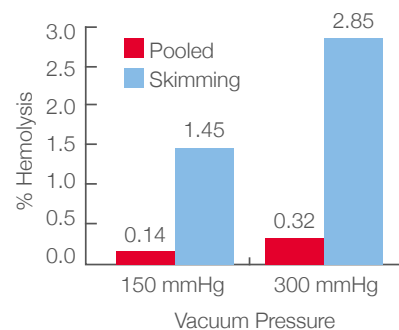
✓ Heparin removal	~ 99%
-------------------	-------

✓ Potassium	~ 96%
-------------	-------

■ **Fat Removal > 99%²**

Integrated SmartSuction technology

- Protects RBC's while maintaining optimal suction.
- Significantly reduce hemolysis compared to constant pressure.³
- More accurate and reliable than wall suction.



Gregoretti et al. showed that greater hemolysis is associated with higher suction forces. Hemolysis is even greater when air mixes with blood.⁴

1. Data based on internal studies and on file at Haemonetics Corp. TR-OTH-100646. Actual performance results may vary depending on in-use variables. Test results are approximate using Haemonetics default protocol with 225 mL processing bowl.

2. Data based on internal studies and on file at Haemonetics Corp. TR-OTH-100641A. Actual performance results may vary depending on in-use variables. Test results are approximate using Fat Reduction default protocol with 225 mL processing bowl.

3. Elkin KR, Yazer M, Kameneva M, Waters J. Transfusion 2007;47(11):20A-21A [DR107247]

4. Gregoretti et al. Transfusion 1996;36:57-60 (DR107498)

Fast and intuitive

The system is fast and intuitive, incorporating state-of-the-art software enhancements.

You'll have the flexibility to define and save password-protected protocols to meet unique surgical needs. The system's touch screen instructions and messaging are easy to read and navigate, complete with on-screen help. Its status beacon is highly visible, from any direction, and the barcode scanner captures disposable, patient, and surgical procedure information.



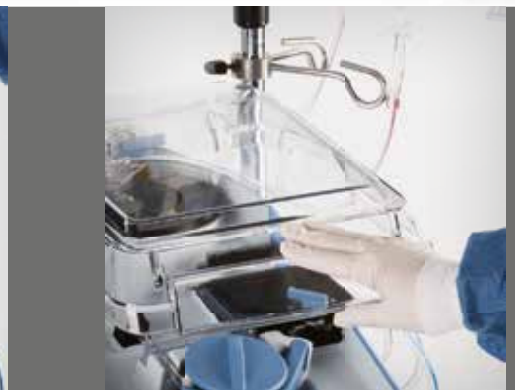
User friendly, full colour touch screen

- Easy to navigate touch screen with colour-coded messaging and corresponding status beacon that can be seen throughout the OR.
- Fast start-up time with suction options available in seconds.
- On-screen help is always available.
- Minimal training necessary to keep staff proficient—meaning more time focused on the patient.

Intuitive and simple programming

- One touch operation with flexibility to customise and save settings for your unique needs.
- Ability to password protect settings groups.
- Custom alarm tones and volume controls.
- Preset procedure record information for ease of entry.
- Flexibility to define settings group for system start-up.





Easy to transport between ORs

- Small footprint, lightweight, and portable.
- Multiple storage options, including a flat cover surface to facilitate transport of materials.
- Durable casters with easy on/off locks.
- Components fold away for easy transport.

Fast and easy disposable set-up

- Top deck visibility to ensure proper set up.
- Cell salvage and sequestration sets are colour-coded for ease of use.
- Single barcode scanning for all disposable sets and ease of data entry.
- Multiple bowl volume options and packaging configurations.



70 mL



125 mL



225 mL

Cell Saver® Elite®+

Autotransfusion System

Secure, data collection, management and transfer capabilities

- Minimise human errors and associated costs through accurate data collection and transfer.
- Access technical data downloads for analysis and best practice sharing.
- Enable communication between the Cell Saver Elite+ device and the hospital network through Wi-Fi or Ethernet connection with the addition of HaemoCommunicator™ software*:
 - Capture and securely transfer procedure data in standard HL7 messaging to the Hospital Information System.
 - Track and trend Cell Saver procedure data effortlessly with records that can be sent directly to BloodTrack Manager® software* for reporting.

*License fee and annual maintenance fees apply.



Meeting your product performance needs of today, while planning for tomorrow.

Haemonetics meets your clinical performance needs of today, while planning for tomorrow. The Cell Saver Elite+ software architecture and system capabilities allow for continued advancement—all while providing secure data collection and transfer.

This results in:

- Better care for patients.
- A reduced need for allogeneic transfusions.
- A commitment to high-quality product engineering, design, manufacturing, and reliability.
- A platform that allows for quick software upgrades.



Ordering Information

Description	List Number	Qty per Case
Cell Saver® Elite®+ Autotransfusion System	CSE-EW-IE*	1
Cell Saver Elite Cart	CSE-EA-1000	1
Cell Saver Elite Fast Pack (225 mL, 205, 208, HAR-A-1000)	CSE-FP-225V	4
Cell Saver Elite Fast Pack (125 mL, 205, 208, HAR-A-1000)	CSE-FP-125V	4
Cell Saver Elite Processing Set (225 mL)	CSE-P-225	8
Cell Saver Elite Processing Set (125 mL)	CSE-P-125	8
Cell Saver Elite Processing Set (70 mL)	CSE-P-70	8
Sequestration Kit	CSE-SQ-1000	8
Collection reservoir w/150 µ filter, 3 L	00205-00	4
Collection reservoir w/20 µ filter, 3 L	00220-00	4
Cell Saver Aspiration & Anticoagulation Line	00208-00	20
SmartSuction® Filtered Vacuum Line, non-sterile	HAR-A-1000	10
RBC Bag, 1000 mL	00245-00	40
Waste Bag, 10 L	CSE-B-1000	10
70 mL Bowl Chuck Adapter	107581-00	1
User Manual	120859-IE*	1

Specifications

Device only	Height: 16.5 in (41.9 cm); Width: 11.75 in (29.8 cm); Depth: 21.5 in (54.6 cm)
Device with cart	Height: 72 in (182.9 cm) poles extended; 48 in (121.9 cm) poles down; Width: 21 in (53.3 cm); Depth: 26.5 in (67.3 cm)
Weight of device	< 56 lbs (25 kg)
Weight of cart	< 40 lbs (18 kg)
Voltage	100–240 VAC ±10%
Pump speed	0–1000 mL/min (adjustable)
Centrifuge speed	Latham bowl: 5650 rpm; Blow-molded bowl: 7500 rpm; Sequestration: 2050–5650 rpm (adjustable)
Fuse rating	100–240V: T3.15A250V
Operating frequency	47–63 Hz
Laser classification	Class 3R laser product
Power cord length	16 ft (4.9 m)
Certifications	ETL listed

* Product code will vary by market

Haemonetics is your **partner in practice**

We offer access to procedural data and troubleshooting to support best practices, **dedicated** field services—including clinical specialist teams, **knowledgeable** sales teams and **on call customer service**.



This results in:

- A committed partner—with implementation, training and support for all ongoing needs.
- Ensured staff proficiency during full initial implementation.
- A hotline for customer support.
- Global presence for more than 50 years servicing the hospital, plasma and blood center communities.



Experience exceptional surgical suite performance, supported by the Cell Saver® Elite®+ system. **Contact us today.**

ROMED

Please contact **Romed** for any further information or requirement

Kruisblok 9 • 2320 Hoogstraten • Belgium

+32 3 380 15 80 • info@romed.be

For a list of worldwide office locations and contact information, visit www.haemonetics.com/officelocations

© 2024 Haemonetics Corporation. Haemonetics, Cell Saver, Elite, SmartSuction, BloodTrack Manager, HaemoCommunicator, and LipiGuard are trademarks or registered trademarks of Haemonetics Corporation in the USA, other countries, or both. 01.2024 Switzerland. COL-COPY-001099-IE(AD)